

# **Eastern Caribbean Cruise on Pacific Princess**

from: Fort Lauderdale, Florida

December 22, 2019 to  
January 5, 2020

Most Pictures by Chris  
Comments by Louis

The same class ships from Holland-America, Koningsdam and Nieuw Statendam, occupy the dock on left in front, behind them looks like the Celebrity Silhouette. Costa Luminosa is sideways in the middle with the C on the yellow stack, Royal Caribbean Allure of the Seas is on the right, The Regal Princess left from the dock opposite where Pacific Princess was. According to records, the Celebrity Edge was also in port.





Fort Lauderdale: High rise living spaces near the harbor exit to the Atlantic Ocean. Downtown along the beach are the buildings on the left. The Intracoastal Waterway connects the town with the port.



# **Ship pictures of the Pacific Princess**

This ship (R3) was formerly one of the eight identical ships (R1 to R8) built for Renaissance Cruises lines from 1998 to 2001. Four of them are now with Oceania Cruises (Insignia, Regatta, Nautica, Sirena) and three are with Azamara Cruises (Journey, Quest, Pursuit). It is not the same as the Pacific Princess ship used in the TV series, The Love Boat, from 1977 to 1990, scrapped in 2014.

All the R class ships were built at Chantiers de l'Atlantique in St. Nazaire, France having the similar size of 30,000 tons and a length of 600 feet with a lower berth passenger capacity of 670-684.



PRINCESS CRUISES

NO JUMPING  
NO DIVING





Christmas decoration entering the dining room.





Instant picture by artist "Paintman" onboard ship





Johnny Depp  
as a Pirate



Chris gets dressed up  
in our cabin  
for formal night.



Three kinds of caviar for dinner



# **United States Virgin Islands**

## **St. John Island (tender port at Cruz Bay)**

The three Virgin Islands of St. Croix, St. Thomas, and St. John were purchased from Denmark in 1917 to serve as United States military bases during World War I. As a result, they still drive on the left side of the road, and there are relics from the history of being governed by Denmark.

About half of St. John is run by the US National Park Service, so do not forget the National Parks Pass if you go to the Underwater National Park on St. John.



# Trunk Bay – National Park Underwater Trail









































lite  
Beach Bar &  
Retail  
→  
Painkillers  
Pain Relievers  
Beer, Procters  
Apparel  
& More  
Snack Shack  
←  
Hot Pops & Treats













## **Guadeloupe (France)**

**(dock at Pointe-A-Pitre)**

There are three adjacent Caribbean islands (Guadeloupe, Dominica, and Martinique) governed by France and considered part of France for political purposes: they speak French, use Euros, drive on the right, and have direct service from Paris by air. There are many vacationers from France. For the purposes of the Traveler's Century Club, they are all considered separate destinations due to differences in history.

This island is shaped like a butterfly, and the flatter Eastern half has a very large sugar growing area and sugar mill. There are nice beaches around the island and the remains of some large estates.









A yellow warning sign with three horizontal panels is mounted on two wooden posts. The sign is located in a lush, green forest near a rocky stream. In the background, several people are seen near the water, and a large tree trunk is visible on the right. The sign's text is in French and English, warning of dangerous divers.

Cascade aux Ecrevisses

Plongeurs dangereux

Diving dangereux





















HOTEL DE VILLE

LIBERTE EGALITE FRATERNITE

SNACK SHITALOU  
SANDWICHES - PANINES - BOITES - WEADES - KESSES

EXPRESS  
0590 23 28 40





Orange

Avec la fibre  
à la maison

excellence

COMMUNAUTÉ D'AGGLOMÉRATION

PÔLE TECHNIQUE

















Surf's Up here on the north shore of the eastern part





## **St. Kitts**

(dock at Basseterre)

On its southwestern coast is the capital, Basseterre, and Georgian buildings from the colonial era. Anchoring Basseterre is the Circus, a plaza modeled after London's Piccadilly Circus, complete with Victorian-style clock tower.

Nevis is a small island off the southern coast that is part of the Government.

There is a tourist sugar cane railroad on the island. All possible tickets for this excursion were purchased by the ship and then resold to passengers at an exorbitant cost.

We hired a taxi to explore the island. Our tour guide was excellent.



ST. KITTS (LIAMIGUA) THE FERTILE ISLAND HAS BEEN  
INHABITED SINCE 2500 BC.

THESE PETROGLYPHS ARE TESTIMONY TO THE PEOPLE WHO LIVED HERE.

IN 1623 THE CARIB INDIAN CHIEF TEGREMAN, WELCOMED  
THE FIRST EUROPEAN SETTLERS HERE IN OLD ROAD BAY.

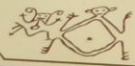


MAINTAINED BY *Caribelle Batik*





ST. KITTS (LIAMIGUA) THE FERTILE ISLAND HAS BEEN  
INHABITED SINCE 2500 B.C.  
THESE PETROGLYPHS ARE TESTIMONY TO THE PEOPLE WHO LIVED HERE.  
IN 1623 THE CARIB INDIAN CHIEF TEGREMAN, WELCOMED  
THE FIRST EUROPEAN SETTLERS HERE IN OLD ROAD BAY.



MAINTAINED BY Caribellé Batik





**Wingfield Estate**

**St. Kitts**

**Established 1625**

## A Brief History Of Wingfield Estate Works

WINGFIELD ESTATE HAD ITS BEGINNINGS IN THE 1620s AND ACQUIRED ITS PRESENT NAME SOMETIME AFTER 1656.

THE FIRST COMMERCIAL CROPS GROWN HERE WERE TOBACCO, COTTON AND INDIGO.

BY 1682 EXTENSIVE SUGAR CANE CULTIVATION HAD BEGUN ON THE ESTATE, AND A NEW WATER-POWERED 'WORKS' TO CONVERT THE CANE JUICE INTO SUGAR WAS BUILT ON THIS SITE.

THROUGHOUT THE 17TH AND 18TH CENTURY THE ESTATE LANDS EXPANDED, AS DID THE SUGAR FACTORY. IN ADDITION TO SUGAR, MOLASSES AND RUM WERE PRODUCED FOR LOCAL CONSUMPTION AND EXPORT.

WHILE THE CANE WAS ALWAYS HARVESTED BY HAND, STEAM AND WATER POWER WERE IN USE AT WINGFIELD BY THE LATE 1850s. BOTH WERE IN USE UNTIL THE 1920s WHEN THE WORKS CLOSED, AND THE CANE GROWN ON THE ESTATE WAS TAKEN BY RAILWAY TO THE NEW SUGAR FACTORY IN BASSETERRE.

THE WORKS ARE NOW PRIVATELY OWNED AND ARE BEING RESTORED AS A HERITAGE SITE FOR THE COMMUNITY OF ST. KITTS AND VISITORS.

Financial Assistance by  European Union, Facilitated by

 **EXPORT**  
RECONSTRUCTION PROJECT





















AMORY BAKERY

THE POLO COMPANY...TO

SPORTS ZONE

LEVI'S













Egret nesting tree





# Martinique

(dock at Fort-de-France)

Martinique is a rugged Caribbean island that's part of the Lesser Antilles. An overseas region of France, its culture reflects a distinctive blend of French and West Indian influences. Its largest town, Fort-de-France, features steep hills, narrow streets and La Savane, a garden bordered by shops and cafes. In the garden is a statue of island native Joséphine de Beauharnais, first wife of Napoleon Bonaparte.

Population: 376,480 (2016)

This island has the largest population and hosts many French tourists. We took a bicycle cart ride through the downtown area and then took a ferry across the bay to a beach resort.





PRINCESS CRUISES

PACIFIC PRINCESS







Our transport around downtown.

















Across the bay via ferry from Fort-de-France













# Trinidad and Tobago

## (dock at Scarborough on Tobago)

We had previously visited the larger island, Trinidad, with an Eastern airlines fly-anywhere trip years ago, like maybe in 1978.

Tobago is the smaller of the 2 Caribbean islands comprising the nation of Trinidad and Tobago. It's known for its wide, sandy beaches and biodiverse tropical rainforest. Framed by mountains, the village-like port capital, Scarborough, is anchored by its central food market. Overlooking the city are the 18th-century ruins of Fort King George, now housing the Tobago Museum and its local art and artifacts.

Area: 116 mi<sup>2</sup>

Elevation: 2,100'

Population: 60,874 (2011)

Currency: Trinidad and Tobago dollar

This island is famous for great scuba diving due to the clear waters.

We took a ship excursion starting with a bus from town to a glass-bottom boat trip with snorkeling to some excellent coral reefs. The highlight was a trip to the all-white linen pool. The camera was not functioning well since it got wet. Water-proof cameras do not seem to last long without some problems.



Docking in downtown Scarborough next to a local ferry



















MISS AYANA

779-06

MERCURY

MALIBU

MALIBU

MALIBU

MALIBU







# Barbados

(dock at Bridgetown)

We had previously visited this island, on our cruise with the Celebrity Summit from Puerto Rico in 2014. The highlight then was a visit to the very nice Harrison's Cave with its electric vehicle transport system. We found that the Summit is still making the same cruise in 2020 as it was in port with our ship. The docks there had expanded for several more visiting ships at the same time.

Barbados is an eastern Caribbean island and an independent British Commonwealth nation. Bridgetown, the capital, is a cruise-ship port with colonial buildings and Nidhe Israel, a synagogue founded in 1654. Around the island are beaches, botanical gardens, the Harrison's Cave formation, and 17th-century plantation houses like St. Nicholas Abbey. Local traditions include afternoon tea and cricket, the national sport.

Capital: [Bridgetown](#)

Recognised regional languages: [Bajan Creole](#)

Currency: Barbadian dollar

This time we took an official ship excursion across town to a beach where we boarded a glass bottom boat for two snorkel expeditions to see sea turtles and then fish on a nearby wreck.





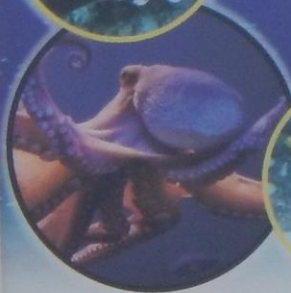
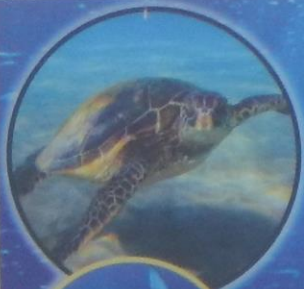






# CARLISLE BAY

B A R B A D O S



**Marine Violations are subject to penalties & legal action:**

- No littering of any kind permitted.
- Marine craft in the bay - maximum speed: 5KPH.
- Marine craft must be 75-200M offshore.
- Coral harvesting & unauthorised removal of marine life is prohibited.

 **BARBADOS  
MARINE TRUST**

 **tbc**  
TERRACE BAY COMMUNITY  
TRUST













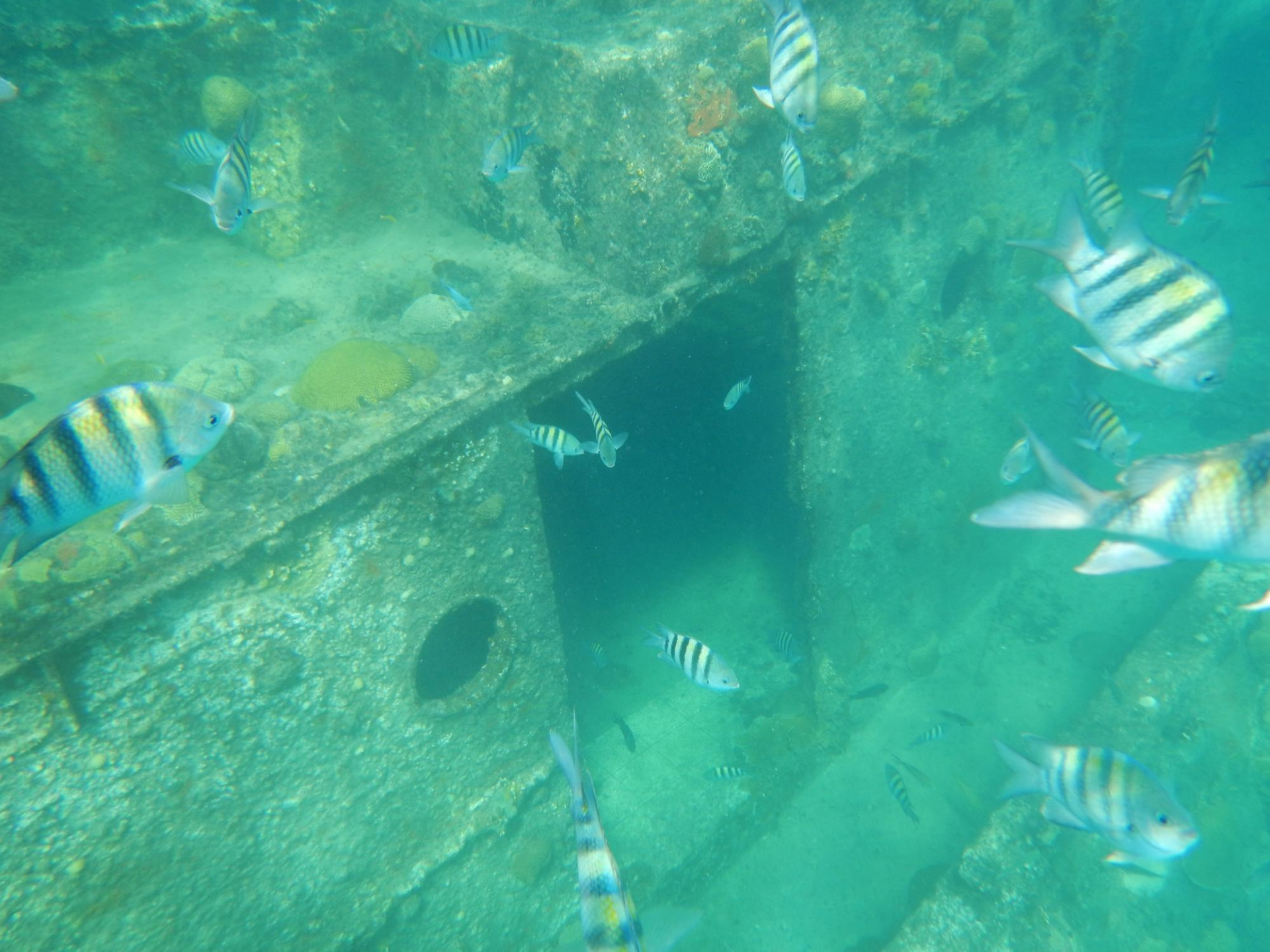




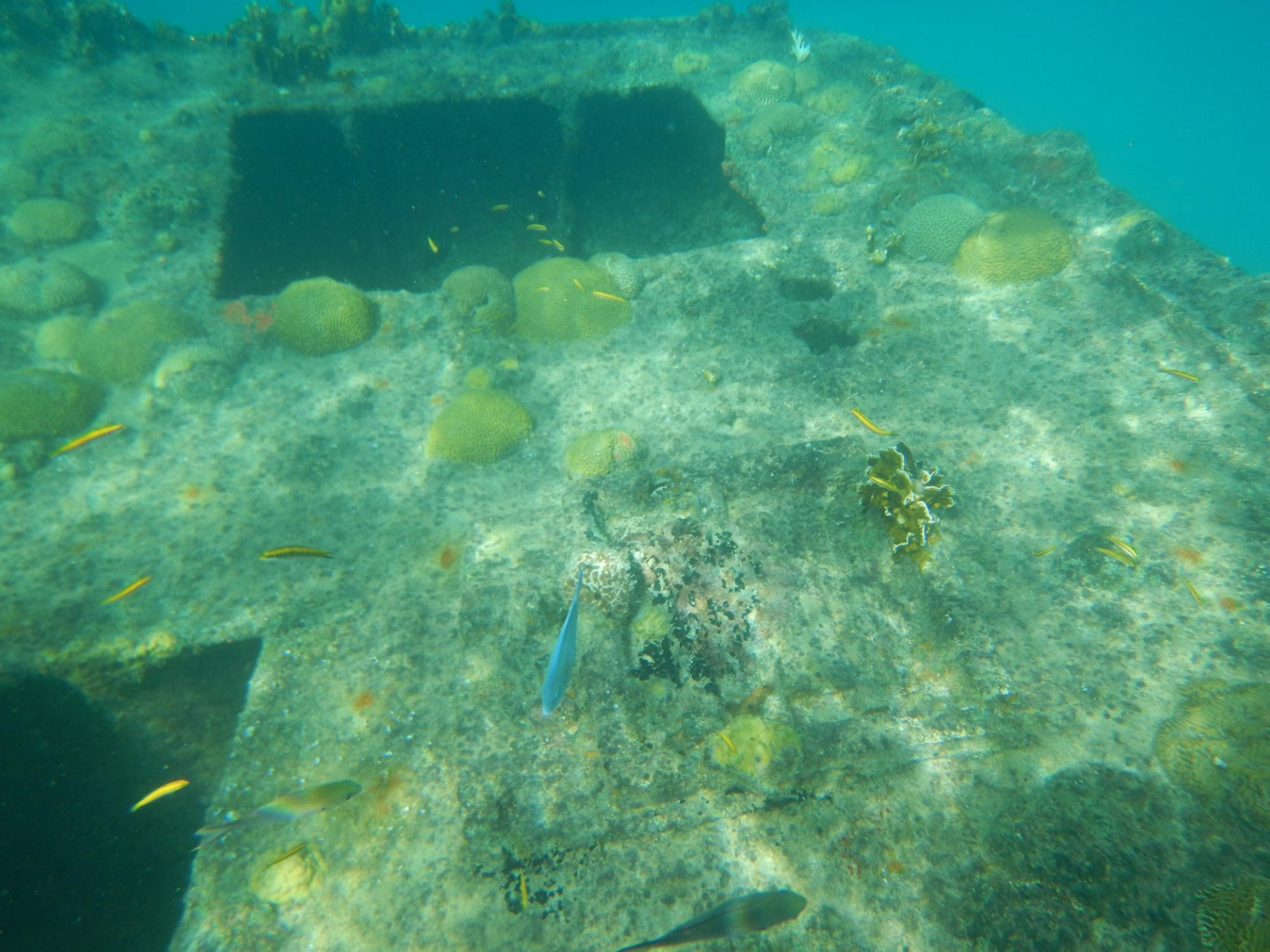






















## Mayreau (St. Vincent and the Grenadines) (tender to Saline Bay)

This was my favorite stop of the trip. Our tourists were the only visitors there and we had the whole beach with a few residents and the ship passengers and crew. A local shop rented us some excellent new swim fins and the snorkeling was excellent on both ends of the beach. There was also a steel drum band that played for us. We had a fresh fish dinner from a beach bar and saw an island ferry provide supplies while we were there.

Mayreau is the smallest inhabited island of the Grenadines, with an area of about 0.46 sq. miles and a population of about 271. The population is centered in an unnamed village, located on Station Hill, a hilltop in the south-west of the island. It is an isolated community, accessible only by boat. [Wikipedia](#)











































Dancers from the ship





TIPS BOX

Mairoun



# Movies!

There are four movies in the Eastern Caribbean set:  
Two movies with sound of the steel drum band on Mayreau.  
Back on Barbados, the shipwreck with fish swimming.  
Back on St. Kitts, the old sugar processing area.

Copy and paste this into a browser or follow the Ctrl+Click link:  
<https://drive.google.com/drive/u/0/folders/1pcm4PxtAqAZ4a98Xq4BDno6zHpYfJBmO>

Look for the new window that shows up with movies,  
then click on the arrow to see the movie.





Two tenders from the ship





Fish dinner from shore bar





Inter-island ferry arrives





and puts freight on the dock.





## Antigua

(dock in downtown St. John's)

This was a repeat visit. We were here on the Celebrity Summit in 2014. That ship was also here again docked at the same berth. Last time we took the ship excursion to Stingray City and that picture became our annual holiday photo. This time Chris went on a Zip Line adventure and then we took the "Admiral Taxi" for a really nice tour around the Jolly Harbor part of the island where the Admiral and his family lived. We ate fruit from a roadside seller. Our visit was on New Year's Day, 2020; most shops in town were closed except for the Casino.

Antigua is one of the 2 major islands that make up the Caribbean nation of Antigua and Barbuda. Ringed with coral reefs, the island is known for its many sandy beaches. Set along English Harbour, restored Nelson's Dockyard, which Admiral Horatio Nelson made his base in the 1780s, includes a marina and the Dockyard Museum. Trails lead up to Shirley Heights, a former military lookout with panoramic views.

Area: 108.5 mi<sup>2</sup>

Elevation: 1,319'

Total islands: 1

Population: 80,161 (2011)



















































## **Virgin Gorda (British Virgin Islands)**

(tender to Spanish Town)

Virgin Gorda is a Caribbean island in the British Virgin Islands. It's known for the Baths, a labyrinth of beachside boulders forming a series of pools and seawater-flooded grottoes. White-sand beaches nearby include Spring Bay and Devil's Bay, plus Savannah Bay farther north. In the island's mountainous north, trails lead up Gorda Peak to a lookout tower with views of the scattered surrounding islets.

[British Overseas Territory: British Virgin Islands](#)

[Population](#): 3,930 (2010)

Originally discovered by Columbus and named "Fat Virgin" due to its appearance. There were two other ships docked at Tortola Island to the West, the new Norwegian Encore (mostly blue towels, younger crowd who liked the go-kart track onboard) and the Crystal Serenity (orange and white striped towels). There was a boat that took their passengers from there to the Baths, leading to overcrowding.

Ship Excursion Example: Fixed time early morning service from tender dock to the Baths and back for \$40. Anytime taxi service to/from the Baths for \$4 per person each way. Several other ship excursions in other islands seemed like poor deals compared to local taxi service.



Internet picture of the “Baths” on Virgin Gorda





Harbor where tender landed.











Look carefully; do you see the lizard?



























## Cruise Summary: Pacific Princess

- 0: Port Everglades, Florida
- 1: Cruz Bay, United States Virgin Islands
- 2: Pointe-A-Pitre, Guadeloupe
- 3: Basseterre, St. Kitts
- 4: Fort De France, Martinique
- 5: Scarborough, Tobago
- 6: Bridgetown, Barbados
- 7: Saline Bay, Mayreau, Grenadines
- 8: St. John's, Antigua
- 9: Virgin Gorda, British Virgin Islands









Two days at sea remain.  
The crew provides entertainment.

Fruit carving





Watermelon Art



Wood Carving





# Cooking Demonstration





Food preparation is a funny show.





Fancy desserts are made







CARLISLE

No. 8148



And you even get to eat them.







Ice Carving Demo