

Living Desert Zoo & Gardens

Palm Desert, California

November 2019

Pictures by Tony Leal

THE LIVING DESERT ZOO | GARDENS







LAW OFFICES OF LEE ARTER
800.790.0000

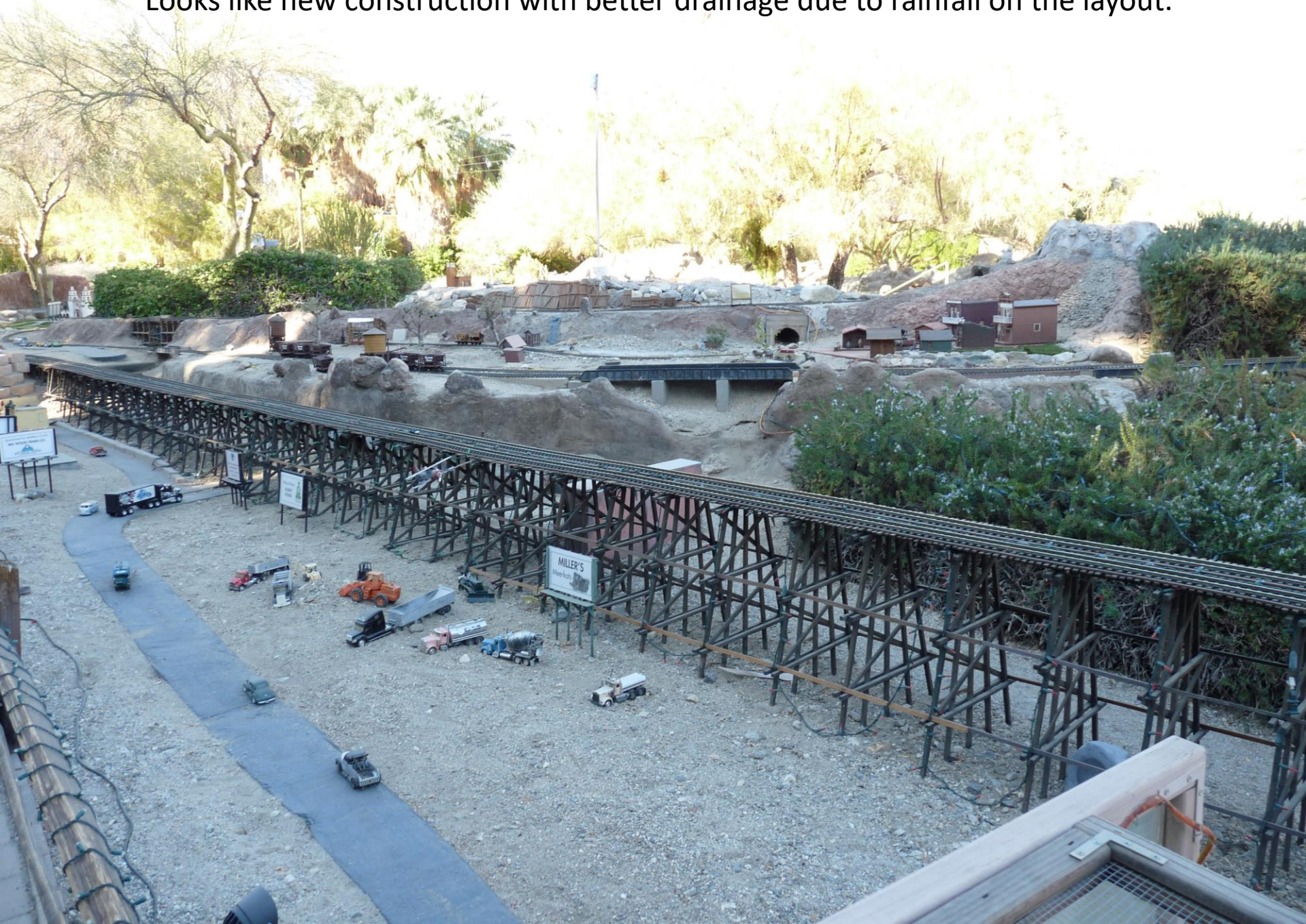
The Mezirka Family



Large outdoor model railroad with scenery



Looks like new construction with better drainage due to rainfall on the layout.





Model of Santa Barbara Mission
And a Route 66 Motel

Coin collecting lake feature





Looks to me like an African breed of cattle

Looks like an African breed of antelope



Feeding the Reticulated Giraffe



Giraffe has long tongue to eat leaves from acacia trees



Grevy's Zebra (the biggest kind)



Another kind of antelope relative
(has no grass in its enclosure)



African wild dog
(has grass in its enclosure)



Prairie Dog relative
(makes hazardous holes)





Some sort of sheep relative



Bird, Bird, Bird Bird is the word

Bighorn Sheep from North America
(really good at climbing rocks and eating all vegetation)



There are a dozen sheep around this hill somewhere





Toy train in kids play area

Merry-Go-Round for kids of all ages
(worth it just for the music)



The real North American Antelope



Large North American bird like a vulture



North American desert tortoise



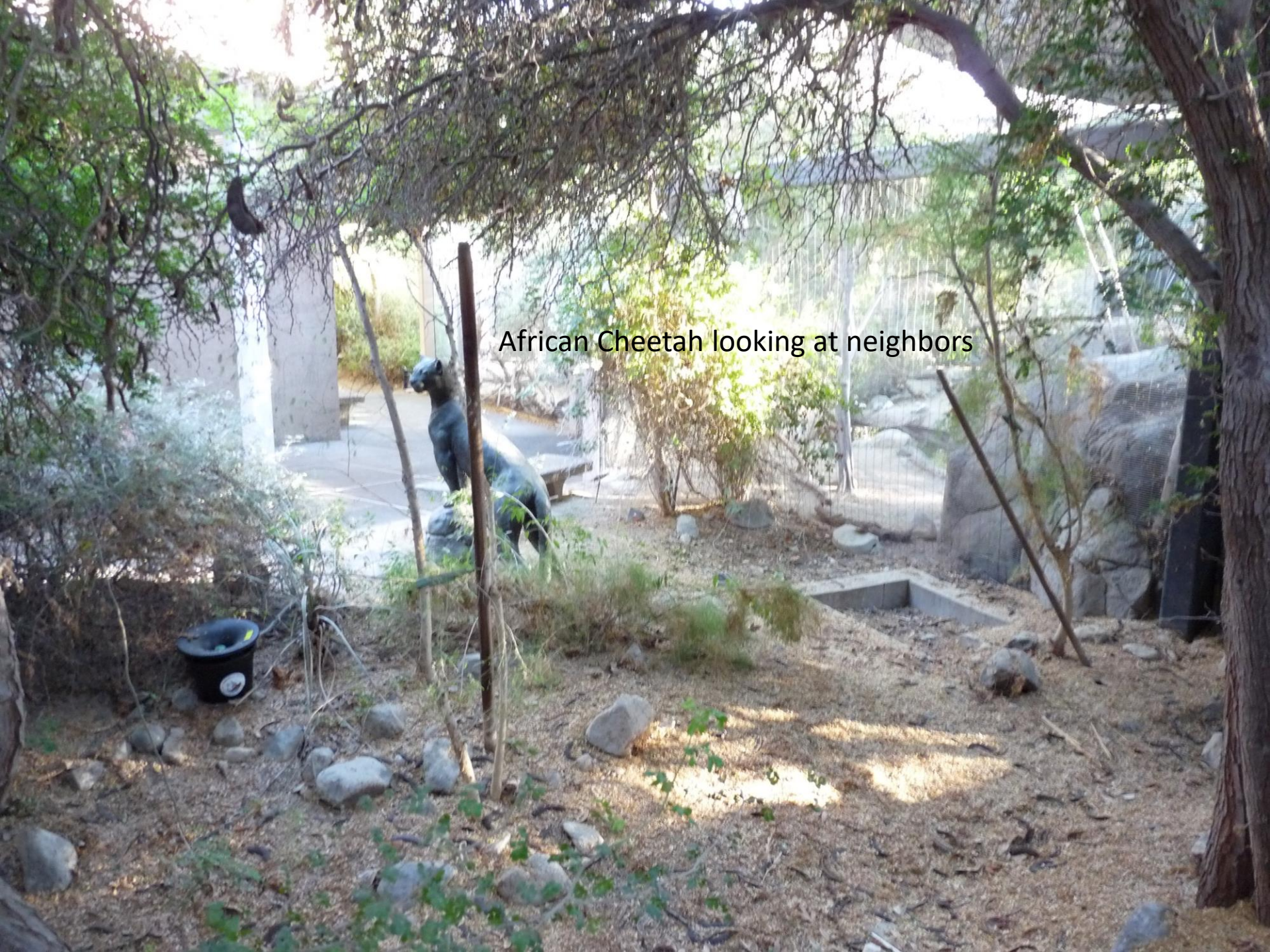
Leopard Tortoise
Gopherus agassizii

The Leopard Tortoise is native to the southwestern United States and northern Mexico. It is a large, slow-moving tortoise that can live for over 100 years. The tortoise is named for the dark, irregular spots on its light-colored shell.



North American desert rattlesnake

African Cheetah looking at neighbors





Wild Boar family

Some sort of Duck





North American Wolf

North America

Africa

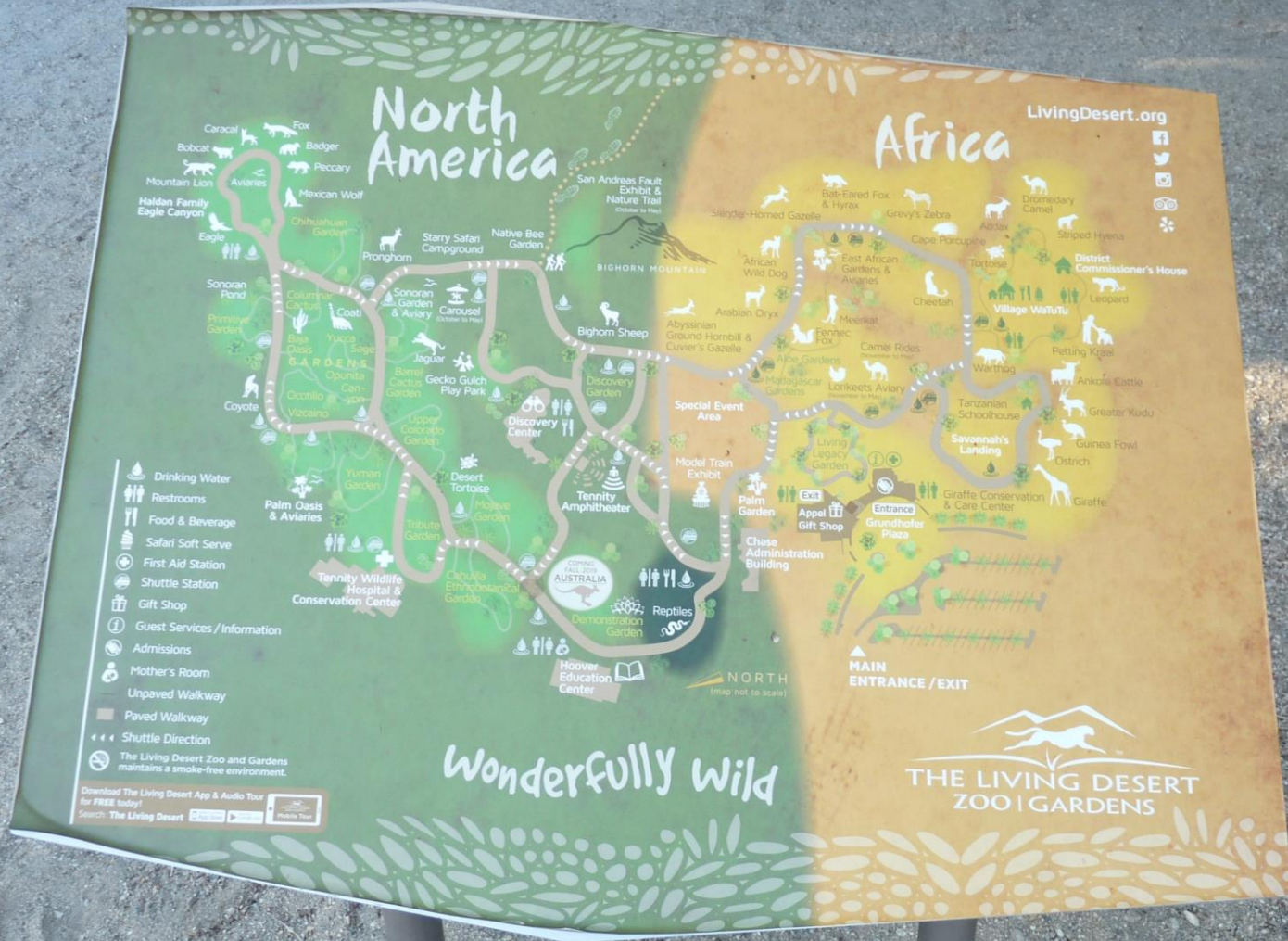
LivingDesert.org

Caracal, Fox, Badger, Bobcat, Mountain Lion, Avianes, Mexican Wolf, Chihuahuan Garden, Pronghorn, Sonoran Garden & Aviary, Carrousel, Jaguar, Gecko Gulch Play Park, Discovery Center, Discovery Garden, Bighorn Mountain, Bighorn Sheep, Arabian Oryx, African Wild Dog, Serval, Horned Gazelle, East African Gazelles & Antelopes, Cape Porcupine, Grevy's Zebra, Dromedary Camel, Striped Hyena, District Commissioner's House, Village Wetlands, Leopard, Petting Kiosk, Ankole Cattle, Greater Kudu, Guinea Fowl, Ostrich, Graffe, Graffe Conservation & Care Center, Entrance, Gift Shop, Appel, Chase Administration Building, Reptiles, Demonstration Garden, Hoover Education Center, Mother's Room, Unpaved Walkway, Shuttle Direction, The Living Desert Zoo and Gardens maintains a smoke-free environment.

Drinking Water, Restrooms, Food & Beverage, Safari Soft Serve, First Aid Station, Shuttle Station, Gift Shop, Guest Services / Information, Admissions, Mother's Room, Unpaved Walkway, Paved Walkway, Shuttle Direction, The Living Desert Zoo and Gardens maintains a smoke-free environment.

Wonderfully Wild

THE LIVING DESERT ZOO | GARDENS



Maybe this dinosaur lived here years ago?

